

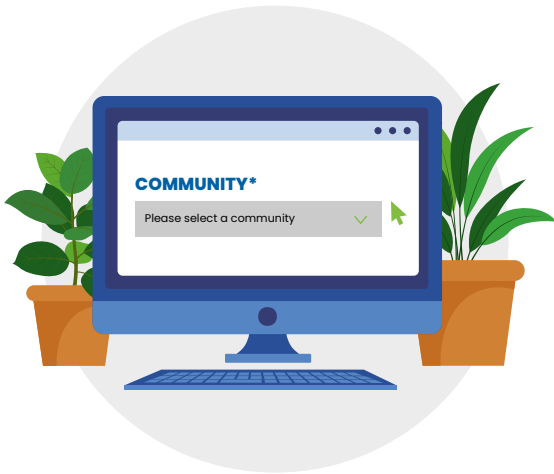


Qualico Communities Calgary is happy to provide all new residents with two potted trees for their new home.

This allows flexibility to plant your trees where you desire within your property.

Below is important information on the ordering process.

TREE ORDERING PROCESS



- Visit the Qualico Communities Calgary website and select the “Our Programs” tab and then go to the “Tree Program” page: <https://qualicocommunitiescalgary.com/programs/tree-program>
- Scroll to select your Community. You can choose by opening the drop-down menu and selecting your Community.
- Inside the search bar, type your home address and select your lot and home.
- Below the drop-down, a PDF will appear and you can look at what trees are offered in your community.
- A text window will appear on the left-hand side. Please fill in the required fields, select your trees from the list provided, and hit the submit button. You will receive a confirmation email within 24 hours of your order.
- The landscaping contractor will reach out before the delivery of your trees. Delivery occurs typically twice yearly with a Spring and late Summer delivery, but this is weather dependent.

If you do not want a tree, please follow the order directions and select the “No Trees Please” option.

FOR YOUR INFORMATION



Qualico Communities Calgary also plants a variety of tree species on the boulevards and medians within the community. These trees are planted in accordance with the Community Planting Plan agreed upon prior to development with the municipality. These boulevards and medians are property of your municipality, and trees growing on the boulevard belong to the municipality. For more information please contact your municipality.



Orders can be placed at any time but will not be fulfilled until the next earliest delivery date. For example, orders placed in the Winter will be delivered in the Spring.



To ensure proper growth and survival, please care for your trees regularly as Qualico Communities Calgary cannot offer ANY warranty or replacement on plant material.



Trees that do not survive will not be replaced
(Please see the Tree Planting, Care & Maintenance Guide).



Before any digging or excavation in your yard, please contact Alberta One Call for utilities and Dig Shaw for fibre optic cables to ensure you know the location of all underground utilities.



Municipal Bylaws require that all trees are planted outside of any Right of Way (ROW). ROW's are areas that are granted to us to allow utility line(s) to be installed and maintained on, over or under privately-owned lands. Please review your property plot plan for information on any ROW on your property.

Please see the property lines vs city lines example below

